



MANAGEMENT'S DISCUSSION AND ANALYSIS

FOR THE THREE AND SIX MONTHS ENDED

APRIL 30, 2024 AND 2023



1.0 INTRODUCTION

The following management discussion and analysis (“MD&A”) is a review of operations, current financial position, and outlook for Signature Resources Ltd. (“Signature” or the “Company”) for the three and six months ended April 30, 2024 and 2023, including other pertinent events up to and including June 25, 2024. The following information should be read in conjunction with the condensed interim consolidated financial statements for the three and six months ended April 30, 2024 and 2023, and notes thereto, (the “Interim Financial Statements”), and the audited consolidated financial statements for the years ended October 31, 2023 and 2022, and notes thereto (the “Annual Financial Statements”). Amounts are reported in Canadian dollars. Additional information related to Signature is available on the Company’s profile at www.sedarplus.ca.

2.0 FORWARD-LOOKING INFORMATION

This MD&A contains forward-looking statements. The forward-looking statements contained herein are subject to certain risks and uncertainties that could cause actual results to differ materially from those projected. Readers are cautioned not to place undue reliance on these forward-looking statements, which reflect management’s (“Management”) analysis only as of the date hereof. Readers should be aware that the Company is under no obligation to publicly release the results of any revision to these forward-looking statements, which may not reflect circumstances, or occurrences of unanticipated events after the date of this document.

3.0 DESCRIPTION OF BUSINESS

The Company was incorporated on May 3, 2010, and is a reporting issuer in the provinces of British Columbia and Alberta. Shares of Signature are listed on the TSX Venture Exchange (“TSXV”) under the symbol “SGU”, on the OTCQB Market under the symbol “SGGTF”, and on the Frankfurt Stock Exchange under the symbol “3S3”. The Company’s principal business activity is the identification, evaluation, and exploration of mineral resource assets in Canada, with a focus on precious metals. The Company is currently exploring Signature’s Lingman Lake gold property in north-western Ontario (“Lingman Lake Project”) or (the “Property”).

The Lingman Lake gold property consists of 1,300 staked claims, four freehold full patented claims and 14 mineral rights patented claims totaling approximately 24,761 hectares. The Property hosts a historical resource estimate of 234,684 oz of gold* (1,063,904 tonnes grading 6.86 g/t with 2.73 gpt cut-off) and includes what has historically been referred to as the Lingman Lake Gold Mine, an underground substructure consisting of a 126.5-meter shaft, and 3-levels at 46-metres, 84-metres and 122-metres depths. The property is not in production.

The Company continues to explore on the patented claims with a goal of completing an initial NI 43-101 resource estimate which is intended to replace the aforementioned historical resource. As part of the recent strategic review the Company has delayed the completion of the initial 43-101 resource estimate until it can complete an additional drilling program that will, amongst other objectives, target inclusion of the high-grade mineralization discovered in the 1940s activity into the resource estimate.

**Cautionary Note.* The historical resource estimate is based on prior data and reports obtained and prepared by previous operators, and information provided by governmental authorities. A Qualified Person (as defined) has not done sufficient work to verify the classification of the mineral resource estimates in accordance with current CIM categories. The Company is not treating the historical estimate as a current NI 43-101-compliant mineral resource estimate. Accordingly, the historical estimate should not be relied upon. Additional information regarding historical resource estimates is available in the technical report entitled, “Technical Report on the Lingman Lake Property” dated January 31, 2020, prepared by John M. Siriunas, P.Eng. and Walter Hanych, P.Geo. available on the Company’s SEDAR profile at www.sedar.com.



4.0 HIGHLIGHTS

TECHNICAL

- *On May 31, 2024 the Company completed its 2024 field program focusing on: 1) mapping and integrating historical exploration activity at the site, 2) locating proposed drill locations and 3) mapping local structures to finalize the design of proposed drill holes. The upcoming drill program is designed to most efficiently use our exploration funds to enrich our understanding and knowledge of the Lingman Lake Project with the goal of publishing a maiden NI 43-101 in the spring of 2025.*
- *During the field program the team collected 101 samples that will be analyzed by SGS Labs in Red Lake.*
- *On May 23, 2024, the Company announced that the Company has received its exploration permit, number PR-21-000218, for the Lingman Lake project. The permit covers 197 claims surrounding the patented claims. The permit is in effect for three years, allowing the Company to complete its 2024 planned drilling campaign as well as expanded drilling operations in the coming years.*
- *On March 26, 2024 the Company announced that Watts, Griffis, and McOuat Limited (“WGM”) had completed updating its geologic model by integrating the data from drilling completed in the 1980’s. This work supported prior assumptions made with the model developed in 2023 and with this work completed WGM has designed a very efficient drill program that will allow the Company to complete its goal of delivering an initial 43-101 resource.*
- *Through the use of AI modeling techniques, WGM has identified a new target within the existing model that has not been drilled previously and will be tested by the 2024 drill program.*
- *On December 13, 2023, the Company noted that the Wataynikaneyap Transmission Power Project continues to make progress in Northwestern Ontario with 99% of the clearing and raking complete, 89% of the structural support installed and 87% of the power line strung. This power project will be important to supporting several First Nations communities in Northwestern Ontario and should provide the needed power and road infrastructure in the region for potential resource development. In November the project connected the Sachigo Lake First Nations community which provides power within 45 kilometers of the Lingman Lake deposit.*

CORPORATE

- *On June 12, 2024 the company announced it had closed the upsized private placement issuing a total of 10,900,000 flow-through shares and 31,143,506 non-flow-through shares for gross proceeds of \$2,102,175 (see section 5.2 – Financing).*
- *On May 1, 2024, the Company announced a non-brokered private placement of flow-through shares (each a “FT Share”) and non-flow-through shares (each an “NFT Share”) for gross proceeds of up to \$1,000,000. On May 23, 2024, Signature announced that the price of each NFT would be revised from \$0.045 to \$0.05 to reflect the current market conditions based on the market demand and in consultation with regulators. In addition, the previously announced \$1,000,000 offering was upsized to \$2,100,000 to reflect the strong demand for Signature’s shares.*
- *On December 13, 2023, Signature announced the completion of a non-brokered private placement through the issuance of 20,045,455 flow-through shares and 5,800,000 non-flow-through shares for gross proceeds of \$696,250 (see section 5.2 – Financing)*
- *On December 13, 2023, the Company announced the appointment of Matthew Goodman to the Board of Directors. Mr. Goodman brings over 12 years of experience in capital markets and junior mining. With this appointment, Mr. Goodman was granted 350,000 stock options at an exercise price of \$0.05 which expire five years from the date of grant. The options vest over a three-year period.*



- *On November 6, 2023, 2,100,000 incentive stock options were granted to directors and officers of the Company. The options have an exercise price of \$0.05 and expire five years from the grant date. Vesting occurs over a three-year period.*

OUTLOOK

Signature's exploration strategy is focused on safely and responsibly defining and expanding the 100%-owned Lingman Lake Project and, within its regional property, the discovery of additional gold deposits with potentially favorable economic attributes. Management continues to be prudent and disciplined in the development and execution of its exploration strategy within the macro environment of changing stock markets and economic conditions related to gold exploration.

The Company has set a number of objectives to be completed in 2024 that will continue advancing us to our goal of publishing an initial NI 31-101 for the Lingman Lake Property. With the foundational work that has been completed to date, we are in a good position to meet those objectives. The first was the completion of updating the geologic model and designing the 2024 drill program. With this task completed, the Signature geologic team completed a field program in May that greatly enhanced the knowledge of the property and allows for finalizing the location and design of 2024 drill program. With the closing of the private placement the Company is in the position to start the 2024 drill campaign in July. Upon completion of those activities expected in the late fall of 2024, the geologic team will be able to complete the data compilation and interpretation and turn it over to the external consultants to begin the process of producing an initial NI 43-101 resource report for the Lingman Lake property.

The resource data work completed to date has provided insight into where the database requires modernization to meet NI 43-101 requirements. It has been determined that the exploration work completed in the 1940s, while informative, cannot be included in the resource as the core cannot be re-assayed for verification purposes. The 2024 drill program has been designed to target the high-grade mineralization indicated by the drilling completed in the 1940's, as well as filling the voids in the geological model of the mineralization. The Company has worked with WGM to design the drill program to fill the gaps in the database and bring the high-grade mineralization into the resource when it is completed. The timing of the resource estimate is ultimately dependent on several factors including the timing of the completion of the drilling program and the availability of funding for exploration activities and the resource modeling.

Additional and parallel work continues the advancement of our understanding of the regional potential of Signature's vast property. This work is expected to further refine the top-ranked regional targets utilizing our ground-based geophysical surveys and surface data collection to focus our efforts on priority targets in our regional exploration program.

2024 Work Programs

In 2023, Signature announced that WGM had completed a new geologic model for the Lingman Lake Project based upon the most recent drilling activity. In December 2023, the Company engaged WGM to update the geologic model with the data from the 1980's drilling. With the updated model as well as information from the historical activities on the property conducted in the 1940's, WGM has completed the design of a small drill program of approximately 5,000 meters, designed to close the previously identified data gaps that delayed the delivery of initial NI 43-101. The Company completed a field mapping and data compilation project in the spring that will provide a fuller picture of the historical work completed at Lingman Lake, help prepare site selection for the 2024 drill program and provide a good roadmap for future surface work and potential targeting for regional activities. During the field program the team collected 101 samples that will be analyzed by SGS Labs in Red



Lake over the month of June. With the completion of the spring mapping program, Signature will commence the newly designed drill program with a targeted completion of activities in the fall of 2024. The new drill program has been designed to make the most efficient use of our exploration budget. This program will fill many of the data gaps within the geologic model, each drill hole will be fully assayed to enhance our knowledge of the geologic characteristics of the mineralized zones and the surrounding rock packages. This work should allow the Company to update the drilling database and provide an updated geologic model before initiating a program targeted at providing an initial NI 43-101 for the Lingman Lake project. The timetable for completing our 2024 work programs is dependent upon Signature being able to access additional capital to fund these activities.

5.0 OVERALL PERFORMANCE

In November of 2022, the Company embarked on a strategic review to better understand the necessary steps to move the Lingman Lake project forward. With the assistance from consulting geologists at WGM and Wood, it became clear that more work needed to be completed before formally moving the resource forward. In 2023, Signature focused on completing this strategic review, upholding its exploration claims in good standing, maintaining its assets and exploration camp to preserve its value, developing a plan for moving the project forward and using its capital in the most efficient manner for shareholders while significantly improving the Company's working capital position. The Company continues to execute on this strategy by having the funding in place to advance its near-term objectives.

National Instrument 43-101 Resource Update

It is anticipated that with the completion of the planned 2024 work programs the Company will be in a position to commence the process of compiling the initial NI 43-101 resource estimate late in 2024 with final publication in the first half of fiscal 2025. The completion of the initial estimate had been previously deferred as it was determined that there were certain data deficiencies that restricted the ability to meaningfully complete the estimate. The Company along with assistance from WGM has designed a drill program that will rectify deficiencies in the historical database as well as explore some potential extensions in mineralization that had been previously underexplored. A forest fire in 2021 resulted in the destruction of a number of core racks and significantly degraded our ability to confirm drilling data from the 1980s that would have resolved some of our deficiencies. It was determined that the 1940s drilling, which reported high-grade intercepts, contained substantial information but would not meet current reporting standards necessary to be included in a compliant NI 43-101 resource. The new drill program has three priorities to advance the Lingman Lake Project. First, to target areas containing high-grade mineralization identified with the 1940s drilling. Second, to drill areas identified in the 1980s dataset where additional data will benefit the current model and third, identifying potential gaps in the mineralization arising from the lack of drilling data. The program is expected to improve the confidence of past exploration efforts with the overall aim of bringing certain historical high-grade drill intercepts of the deposit to current technical standards. The exploration program will also seek to identify exploration vectors for targeting potential, high-grade mineralization in the Lingman Lake deposit.

The planned resource estimate is intended to provide Signature with several key insights to further the Company's exploration strategy, including:

- Publishing an initial NI 43-101 compliant resource; and
- Providing a better understanding of the local geology and controls on the mineralization; and
- Positioning the team to continue to unlock and extend the initial resource with improved geological guidance for drilling, as testing and developing new drill targets at Lingman Lake continues.

Substantial work has been completed and has contributed to an improved understanding of the Lingman Lake deposit. A review of this work has included:



- Finalizing the compilation of the drill and assay database
- 3D geologic modelling and analysis
- The identification and analysis of gaps and opportunities to improve the completeness of the assay database to support geological interpretation and the resource estimate
- WGM has provided supplemental assistance and peer review with the initial resource work completed and provided an updated geologic model and analysis that further advances our understanding of the area and guides future drill programs.

With the completion of the 2024 programs and the publication of the Initial 43-101, management believes that the Company will be in a good position to advance to the next drilling program that will focus on expanding the resource potential of the Lingman Lake property. With an enhanced understanding of the local mine area geology, management will be able to better identify the most prospective regional targets within the extensive greenstone belt that Signature controls.

Site Activities Summary

The Company has commenced a number of activities at the site for 2024 with the goal of completing its 2024 drill program which will lead to the initiation of the work to deliver the maiden NI 43-101 resource report for Signature in the Spring of 2025.

- From May 2 to May 31, 2024 the team conducted the field mapping program, sample collection, reconnaissance of drill locations and geological, including more detailed structural mapping. The team was able to establish trails to a number of the proposed drill sites and was also able to conduct maintenance on a number of the pieces of equipment necessary for operating the camp and also identified a few items of necessary maintenance to be completed before the summer drill program could begin. These repairs will be made in late June and should allow the summer drilling program to begin in early July.

Site activities during 2023 were restrained due to limited funds for drilling activities. All activities conducted during the year were for the completion of the strategic review, work needed to be done by WGM for updating its geologic model and necessary groundwork in preparation for designing the new 2024 drill program. In addition, Signature conducted field activities targeted at maintaining and preserving its exploration camp in preparation for its 2024 activities.

- From April 29 to May 6, 2023 representatives from WGM and Signature conducted a site visit to inspect the core stored at site, discuss the database and review steps forward for their review, analysis and updating of the geologic model;
- From June 14 to July 3, 2023 Signature had a team at site conducting field operations focused on clearing brush and pushing back fire breaks to protect the equipment, exploration camp and any historical core located at site providing a higher level of protection of our assets. Despite a high fire season in the summer of 2023, especially just to our South, the camp did not incur any wildfire activity on our property or surrounding claims.
- From September 26 to October 6, 2023 Signature conducted camp maintenance and equipment repair activities in preparation for winter;
- From November 18 to December 1, 2023 the Signature team began preparation for the field mapping program that will focus on identifying historical drilling and trenching activity. The team was able to clear the brush that had grown up around the known trenches as well as uncover some previously unknown



trenches. This activity provided a good starting point for the mapping program that was completed in the spring of 2024. With completion of this work, the camp was closed for the winter.

Land Tenure

Assessment work was filed through the Mining Land Administration System (MLAS) Ministry of Energy Northern Development and Mines, Ontario, in June 2022, for the 2021 Airborne Geophysical Survey and 2021 Ground Magnetometer Survey. Expenditures totaling \$164,056 from the Airborne survey, and \$92,087 from the Ground Magnetometer Survey were allocated to the Company's claims. The allocated expenditures were distributed into reserves for respective claims for future assessment distribution. The Company continues to maintain the granted claims. The company also filed a completed diamond drill report on April 13, 2023 and 3D IP Survey report on May 4, 2023 for the 2021 activity that will provide further allocated expenditures for future assessment distribution. The Company plans to review and evaluate its land claims package (**See Figure 1**) and adjust its holdings based on the results of its regional exploration work. Over the past year the Company has reduced its staked claims package by 134 claims and will continue to review the prospective potential of the claims held going forward. All the claims remain in good standing with authorities. Currently, Signature has 1,300 staked claims, four freehold full patented claims and 14 mineral rights patented claims totaling approximately 24,761 hectares.

LINGMAN LAKE PROPERTY

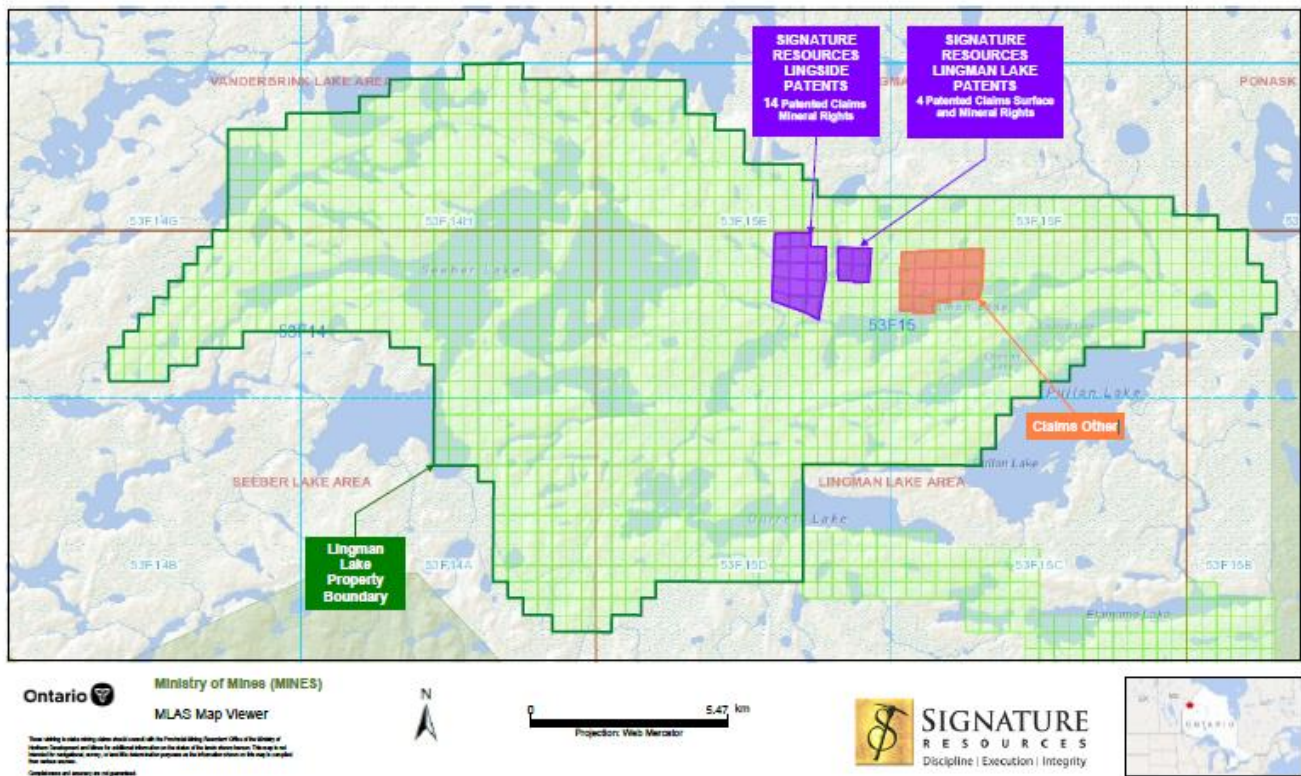


Figure 1 – Lingman Lake Gold Project Land Holdings Covering 90% of the Lingman Lake Greenstone Belt



5.1 RESULTS OF OPERATIONS

SUMMARY OF QUARTERLY RESULTS

	FY2024		FY2023				FY2022	
	Q2	Q1	Q4	Q3	Q2	Q1	Q4	Q3
	\$	\$	\$	\$	\$	\$	\$	\$
Net revenue	Nil	Nil	Nil	Nil	Nil	Nil	Nil	Nil
Loss for the period	(296,391)	(249,480)	(18,617)	(415,837)	(435,050)	(269,659)	(590,082)	(1,073,238)
Loss per share ⁽¹⁾	(0.00)	(0.00)	0.00	(0.01)	(0.01)	0.00	(0.01)	(0.02)
E&E expenditures	133,277	61,447	72,090	101,527	166,749	60,471	149,793	574,559
Total assets	1,098,014	1,313,575	955,439	1,006,206	1,425,696	1,207,641	1,308,232	1,515,598
Long-term liabilities	863,543	854,399	846,225	812,472	803,869	795,357	786,935	855,879

⁽¹⁾Basic and diluted

Three months ended April 30, 2024 vs April 30, 2023

During the quarter ended April 30, 2024, the Company incurred a net loss of \$296,391 (Q2/2023 - \$435,050), which consisted of exploration and evaluation expenditures of \$133,277 (Q2/2023 - \$166,749), office and general expenses of \$48,723 (Q2/2023 - \$97,300), salaries and wages of \$26,766 (Q2/2023 - \$45,185), share-based payments of \$4,286 (Q2/2023 - \$15,185), depreciation on equipment of \$80,664 (Q2/2023 - \$89,843), and professional fees of \$13,302 (Q2/2023 - \$21,178). The decrease in net loss of \$138,659 period-over-period was mainly attributable to a decrease in exploration and evaluation expenditures, significantly reduced office and general costs, less share-based payments during the period due to the timing of vesting of options granted to directors of the Company during the current and prior periods, and reduced management fees included in salaries and wages. During the quarter, exploration activities at the site were deferred while the technical team focused on the work necessary to determine the initial 43-101 resource estimate on the Lingman Lake Project.

Six months ended April 30, 2024 vs April 30, 2023

During the six months ended April 30, 2023, the Company incurred a net loss of \$545,871 (April 30, 2023 - \$704,709), which consisted mainly of exploration and evaluation expenditures of \$194,724 (April 30, 2023 - \$227,220), salaries and wages of \$51,666 (April 30, 2023 - \$75,585), office and general expenses of \$96,675 (April 30, 2023 - \$151,774), professional fees of \$23,842 (April 30, 2023 - \$37,919), and share-based compensation expense of \$25,779 (April 30, 2023 - \$31,530). Total operating expenses, year-over-year, decreased by \$158,838, principally due to reduced exploration activity, the reduction of management salaries, and significantly decreased office and general costs. Share-based compensation expense was somewhat lower in Q2/2024 due to fewer stock option grants during the period compared to the six months ended April 30, 2023, and lower amortization and vesting of several tranches of option grants in the current year period compared to the prior year comparative period. Depreciation was generally in line with the prior year comparative period.

5.2 FINANCING

On May 1, 2024, Signature announced a non-brokered private placement of flow-through shares (each, a “FT Share”) and non-flow-through shares (each, a “NFT Share”) for gross proceeds of up to \$1,000,000 (the “May Offering”). Each FT Share was offered at \$0.05 per share and each NFT Share was offered at a price of \$0.045 per share. On May 23, 2024, Signature revised the price of each NFT Share to \$0.05 to reflect the current market conditions based on market demand and in consultation with regulators. In addition, the previously announced



\$1,000,000 offering was upsized to \$2,100,000 to reflect the strong demand for Signature’s shares. The May Offering closed on June 12, 2024, and was comprised of 10,900,000 FT Shares at \$0.05 per share and 31,143,506 NFT Shares at a price of \$0.05 per share for total gross proceeds of \$2,102,175. Thirty six percent of the May Offering was purchased by members of the Company’s board of directors and management.

On December 13, 2023, the Company completed a non-brokered private placement of flow-through shares (“FT Shares”) and non-flow-through shares (“NFT Shares”) for gross proceeds of \$696,250 (the “December Offering”). The December Offering was comprised of 20,045,455 FT Shares at \$0.0275 per share and 5,800,000 NFT Shares at a price of \$0.025. Twenty percent of the December Offering was purchased by members of the Company’s board of directors and management.

5.3 EQUIPMENT AND EXPLORATION AND EVALUATION (“E&E”) EXPENDITURES

The Company did not purchase any equipment during the three and six months ended April 30, 2024 (year ended October 31, 2023 - nil). Management believes the capital investment in equipment in prior year periods supports the optimization of the exploration camp, improves drilling support, worker safety, and effectiveness.

MINERAL PROPERTY EXPENDITURES AND REHABILITATION PROVISION

The following table summarizes the E&E expenditures incurred at the Lingman Lake Property:

	April 30, 2024	October 31, 2023
Cumulative expenditures, beginning of the period	\$ 15,832,543	\$ 15,431,706
Travel and lodging	13,365	31,249
Contract labour, salaries, wages	9,810	14,809
Asset retirement obligation accretion expense (note 11)	17,318	34,232
Field Supplies (recovery) ¹	(2,187)	29,180
Assays	-	11,804
Consulting expenses (note 7)	83,172	161,428
Equipment rentals	2,425	15,406
Logistics	15,446	77,671
Geophysical and geological consulting	35,875	-
Asset retirement obligation adjustment (note 11)	-	25,058
Total expenditures during the period	194,724	400,837
Cumulative expenditures, end of the period	\$ 16,027,267	\$ 15,832,543

¹ During the period ended April 30, 2024, the Company received proceeds from an insurance claim for field supplies and equipment that were damaged by snow during the previous winter season.

Rehabilitation Provision

Historical work done by other companies on the Company's mining sites also resulted in MENDM issuing an order to the Company requiring the filing of a mine closure plan (“MCP”). Therefore, the rehabilitation provision recorded in the consolidated financial statements represents the estimate of the eventual legal and contractual obligations associated with a future closure of the Company’s mining operations either progressively or at the



end of the mine life. A draft MCP was submitted to MENDM in September 2021. The company is awaiting a response from MENDM to discuss the results of actions taken by the Company with respect to the MCP, and to discuss any further requirements needed to finalize the closure plan. The MCP obligations consist of estimated costs associated with reclamation and monitoring activities and the removal of tangible assets from the Company's mining sites.

A summary of the Company's rehabilitation provision is presented below:

As at	April 30, 2024	October 31, 2023
Balance, beginning of period	\$846,225	\$786,935
Change in estimate	-	25,058
Accretion expense	17,318	34,232
Balance, end of period	\$863,543	\$846,225

During the year ended October 31, 2023, the Company recorded an adjustment to the liability on the statement of financial position at its present value amount, adjusted for 2.58% (2022 – 2.53%) annual inflation, and discounted back to October 31, 2023, using a risk-free interest rate of 3.92% (2022 – 4.35%), which resulted in a change in estimate of \$25,058 (2022 – reduction of \$95,794), and is included in exploration and evaluation expenditures. During the three-month period ended April 30, 2024, the Company has recorded accretion expense of \$9,144 (April 30, 2023 - \$8,512). During the six-month period ended April 30, 2024, the Company has recorded accretion expense of \$17,318 (April 30, 2023 – \$16,934), which is included in exploration and evaluation expenditures (note 6).

5.4 LIQUIDITY AND CAPITAL RESOURCES

At April 30, 2024, the Company had cash and investments of \$331,608 (October 31, 2023 - \$126,929) and a working capital deficiency of \$568,657 (October 31, 2023 –\$875,658). The Company still requires additional financing to pay for capital expenditures and exploration and administrative costs required to advance exploration on its Project. The Company has a history of operating losses and of negative cash flows from operations. The Company remains reliant on capital markets for future funding to meet its ongoing and future obligations.

Prior to the establishment of operations at the Company's Lingman Lake Property, the Ministry of Energy, Northern Development and Mines ("MENDM") had requested the removal of certain above ground storage tanks containing approximately 800,000 litres of fuel, which was considered a mine hazard. This request was made to prior owners of the mine site and they failed to comply with MENDM's request to clean it up. Consequently, MENDM took action and managed the disposition of the fuel at a cost of \$884,325. (the "Clean-up Cost"). Pursuant to accounting principles, the potential Clean-up Cost has been recorded on the Company's statement of financial position as a current accrued liability, however no attempt at collection by MENDM has been made to date. The Company plans to address these items with MENDM when the MCP is reviewed. To date, the Company has received no response to its draft MCP, and the timing of the review is undetermined. Further details are provided in the section of the report under Rehabilitation Provision.

On July 31, 2023, the Company sold two generators that were not in use for proceeds, net of HST and broker commissions, of \$155,000.



5.5 OUTSTANDING SHARE DATA

For information regarding outstanding share capital of the Company, please see the table presented below.

As at	June 25, 2024	April 30, 2024	October 31, 2023
Common shares	148,769,863	106,745,127	80,899,672
Options	5,820,000	5,820,000	5,060,000
Warrants	-	-	-
Fully diluted share capital	154,589,863	112,565,127	85,959,672

COMMON SHARES

The Company is authorized to issue an unlimited number of common shares without par value.

The Company has never paid dividends.

See note 8(b) – Share Capital in the Interim Financial Statements for details of all share issuances during the six months ended April 30, 2024 and the year ended October 31, 2023 (the “Reporting Periods”).

The following is the share capital activity for the Reporting Periods:

	Number of common shares	Amount
Balance, October 31, 2022	55,139,622	\$17,871,069
Private placements	20,325,000	813,000
Less: share issuance costs	-	(14,522)
Shares issued for debt	5,435,050	217,402
Balance, October 31, 2023	80,899,672	\$18,886,949
Private placements	25,845,455	696,250
Less: share issuance costs	-	(2,500)
Premium on flow-through shares	-	(50,113)
Balance, April 30, 2024	106,745,127	\$19,530,586

STOCK OPTIONS

See note 8(c) – Share Capital - Stock Options in the Interim Financial Statements for details of all stock option activity during the Reporting Periods.

Signature has a stock option plan (the “SOP”), the purpose of which is to attract, retain and motivate management, staff, and consultants by providing them with the opportunity, through share options, to acquire a proprietary interest in the Corporation and benefit from its growth. The maximum number of options to be issued under the Plan shall not exceed 10% of the total number of common shares issued and outstanding. The options are non-transferable and may be granted for a term not exceeding ten years. The exercise price and the vesting period of the options are determined by the Board based on the market price of the common shares, subject to all applicable regulatory requirements.

The following summarizes the stock options activity for the year ended October 31, 2023 and the six months ended April 30, 2024:



	Number of Options	Weighted Average Exercise Price \$
Balance at October 31, 2022	7,237,500	0.45
Granted	1,000,000	0.05
Expired	(777,500)	0.41
Cancelled – note 8(c)(ii)	(2,400,000)	0.40
Balance at October 31, 2023	5,060,000	0.42
Granted	2,450,000	0.05
Expired	(1,690,000)	0.53
Balance at April 30, 2024	5,820,000	0.22

On November 6, 2023, 2,100,000 options were granted to directors of the Company. The options have an exercise price of \$0.05 and expire five years from the grant date. These options vest as to 25% immediately and 12.5% semi-annually thereafter until the third anniversary of the grant date. The fair value of these options was estimated on the date of grant using the Black-Scholes option pricing model with the following assumptions: expected dividend yield of 0%; risk-free interest rate of 3.87% and expected volatility of 154%. The fair value assigned to these options was \$46,802.

On December 13, 2023, 350,000 options were granted to a new director of the Company. The options have an exercise price of \$0.05 and expire five years from the grant date. These options vest as to 25% immediately and 12.5% semi-annually thereafter until the third anniversary of the grant date. The fair value of these options was estimated on the date of grant using the Black-Scholes option pricing model with the following assumptions: expected dividend yield of 0%, risk-free interest rate of 3.33% and expected volatility of 156%. The fair value assigned to these options was \$9,500.

During the six months ended April 30, 2024, 1,690,000 options expired, unexercised due to a director resigning from the Board of Directors, and a consultant leaving the Company. The options had a weighted average exercise price of \$0.54.

During the six months ended April 30, 2024, a total of \$25,779 (2023 - \$31,529) was recorded for share-based compensation expense and charged to contributed surplus for options that vested during the period.

The following summarizes the outstanding stock options at April 30, 2024:

Grant Dates	Exercise Price \$	Weighted Average Remaining Life (years)	Number of Options Outstanding	Number of Options Exercisable
Jun. 17 - Nov. 7, 2019	0.25 - 0.38	0.13 – 0.52	70,000	70,000
Jul.14 - Aug. 17, 2020	0.25 - 0.50	1.21 – 1.30	500,000	500,000
Nov. 8 - Dec. 23, 2020	0.35 - 0.65	1.53 – 1.65	840,000	840,000
Jan. 19 - Feb.16, 2021	0.55 - 0.65	1.72 – 1.80	120,000	120,000
May 10 - Aug. 4, 2021	0.80 - 1.00	0.03 – 2.26	240,000	212,500
May 27, 2022	0.30	3.07	600,000	300,000
June 26, 2023	0.05	4.16	1,000,000	375,000
November 06, 2023	0.05	4.52	2,100,000	525,000
December 13, 2023	0.05	4.62	350,000	87,500
	0.22	3.41	5,820,000	3,030,000



Subsequent to the period ended April 30, 2024, 70,000 options expired, unexercised. The weighted average exercise price of the options was \$0.55.

WARRANTS

The following table reflects the activity of warrants for the six months ended April 30, 2024, and the year ended October 31, 2023:

	Number of Warrants	Weighted Average Exercise Price \$
Balance, October 31, 2022	2,434,828	1.16
Expired	(2,434,828)	1.16
Balance, October 31, 2023 and April 30, 2024	-	-

5.6 OFF-BALANCE SHEET ARRANGEMENTS

A 3% net smelter return (“NSR”) is attached to each of three different claim blocks:

- a) four full patented mining (mineral and surface rights) claims known as the Lingman Lake Mine;
- b) 12 legacy Crown land claims known as Lingman Lake East/Anaconda claims, and
- c) 14 partially patented mining (mineral rights) claims known as the Lingside claims.

The Company can purchase one-half of the NSR of each claim block for \$1,500,000, collectively totaling \$4,500,000.

5.7 PROPOSED TRANSACTIONS

There are no proposed transactions at the date of this report.

5.8 RELATED PARTY TRANSACTIONS

Short-term management fees paid during the three and six months ended April 30, 2024 and 2023 relate to services provided by the CFO and Corporate Secretary.

Period ended April 30,	Three months		Six months	
	2024	2023	2024	2023
Short term wages	\$ 24,900	\$ 24,900	\$ 49,800	\$ 49,800
Share-based payments	3,819	13,454	20,733	15,301
	\$ 28,719	\$ 38,354	\$ 70,533	\$ 65,101

As at April 30, 2024, the Company owes \$nil (October 31, 2023 - \$nil) to executives of the Company for unpaid consulting fees and expenses.

Refer also to section 5.2 for details of related party participation in the Company’s private placements.



5.9 FINANCIAL INSTRUMENTS

Categories and fair value of financial instruments

The Company's financial instruments consist of cash, investments, amounts receivable, and accounts payable and accrued liabilities. The carrying values of the Company's short-term financial assets and liabilities approximate their fair values due to their short periods to maturity.

The following table summarizes the categories and fair values of the Company's financial instruments:

At April 30, 2024				
	Carrying Value			Fair Value
	FVTPL	FVTOCI	Amortized Cost	Total
Financial Assets and Liabilities			\$	\$
Cash	-	-	25,858	25,858
Investments	-	-	305,750	305,750
Amounts receivable	-	-	30,188	30,188
Accounts payable and accrued liabilities	-	-	(1,029,144)	(1,029,144)

At October 31, 2023				
	Carrying Value			Fair Value
	FVTPL	FVTOCI	Amortized Cost	Total
Financial Assets and Liabilities			\$	\$
Cash	-	-	121,179	121,179
Investments	-	-	5,570	5,570
Amounts receivable	-	-	14,884	14,884
Accounts payable and accrued liabilities	-	-	(1,064,875)	(1,064,875)

6.0 CRITICAL ESTIMATES

Significant assumptions about the future and other sources of estimation uncertainty that management has made during the reporting period could result in a material adjustment to the carrying amounts of assets and liabilities in the event that actual results differ from assumptions made. These critical estimates relate to i) exploration and evaluation expenditures, ii) income, value-added, withholding, and other tax-related estimates, iii) estimations of restoration, rehabilitation, and environment obligations, and iv) share-based payments.

A detailed description of Management's estimates can be found in note 3 – *Significant Accounting Policies* – in the Annual Financial Statements.

6.1 ACCOUNTING POLICIES

A detailed description of the accounting policies applied by the Company can be found in note 3 – *Significant Accounting Policies* – in the Interim Financial Statements.

a) New Accounting Standards



IAS 8 – In February 2021, the IASB issued ‘Definition of Accounting Estimates’ to help entities distinguish between accounting policies and accounting estimates. The amendments are effective for year ends beginning on or after January 1, 2023.

This amendment was adopted on November 1, 2023. The adoption of this standard did not have a material impact on the Company’s financial statements.

b) *Standards issued and effective for annual periods beginning on or after November 1, 2024*

IFRS 10 – Consolidated Financial Statements (“IFRS 10”) and IAS 28 – Investments in Associates and Joint Ventures (“IAS 28”) were amended in September 2014 to address a conflict between the requirements of IAS 28 and IFRS 10 and clarify that in a transaction involving an associate or joint venture, the extent of gain or loss recognition depends on whether the assets sold or contributed constitute a business. The effective date of these amendments is yet to be determined; however early adoption is permitted.

IAS 1 – In February 2021, the IASB issued ‘Disclosure of Accounting Policies’ with amendments that are intended to help preparers in deciding which accounting policies to disclose in their financial statements. **Presentation of Financial Statements (“IAS 1”)** was amended in January 2020 to provide a more general approach to the classification of liabilities under IAS 1 based on the contractual arrangements in place at the reporting date. The amendments clarify that the classification of liabilities as current or noncurrent is based solely on a company’s right to defer settlement at the reporting date. The right needs to be unconditional and must have substance. The amendments also clarify that the transfer of a company’s own equity instruments is regarded as settlement of a liability, unless it results from the exercise of a conversion option meeting the definition of an equity instrument. The amendments are effective for annual periods beginning on or after January 1, 2024.

The Company is currently assessing the impact of these standards.

7.0 RISKS AND UNCERTAINTIES

The Company is in the business of acquiring and exploring natural resource properties in Canada. Due to the high-risk nature of the Company’s proposed business and the present stage of exploration of its resource properties, which are at very early stages, the following risk factors, amongst others, may apply:

Exploration Stage Company

The Company does not hold any known mineral reserves of any kind and does not generate any revenues from production. The Company’s success depends largely upon its ability to locate commercially productive mineral reserves. Mineral exploration is highly speculative in nature, involves many risks and frequently is non-productive. There is no assurance that exploration efforts will be successful.

Success in establishing reserves is a result of several factors, including the quality of management, the level of geological and technical expertise, and the quality of property available for exploration. Once mineralization is discovered, it may take several years in the initial phases of drilling until production is possible, during which time the economic feasibility of production may change.

Substantial expenditures are required to establish proven and probable reserves through drilling and bulk sampling, to determine the optimal metallurgical process to extract the metals from the ore and, in the case of new properties, to construct mining and processing facilities. Because of these uncertainties, no assurance can



be given that any future exploration programs will result in the establishment or expansion of resources or reserves.

Exploration and Development Risks

The business of exploring for minerals and mining involves a high degree of risk. There are no assurance the Company's mineral exploration activities will be successful. Few properties that are explored are ultimately developed into producing mines. In exploring and developing any future mineral deposits, the Company could be subject to an array of complex economic factors and technical considerations. Delays in obtaining governmental approvals, inability to obtain financing or other factors could cause delays in exploring and developing properties. Such delays could materially adversely affect the financial performance of the Company. Unusual or unexpected formations, formation pressures, power outages, labour disruptions, flooding, explosions, cave-ins, landslides, environmental hazards, the discharge of toxic chemicals and the inability to obtain suitable or adequate machinery, equipment or labour are other risks involved in the operation of mines and the conduct of exploration programs. The Company has limited experience in the development and operation of mines and in the construction of facilities required to bring mines into production. The Company has relied and may continue to rely upon consultants and others for operating expertise. Depending on the price of minerals produced, the Company may determine that it is impractical to commence or continue commercial production.

Permits and Licenses

The operations of the Company require licenses and permits from various governmental authorities. There can be no assurance that the Company will be able to obtain all necessary licenses and permits that may be required to carry out exploration, development, and mining operations at its projects, on reasonable terms or at all. Delay or failure to obtain such licenses and permits or failure to comply with the terms of any such licenses and permits that the Company does obtain, could have a material adverse effect on the Company.

Claim Title Matters

Often, the mining claims in which the Company could acquire an interest in have not been surveyed and, accordingly, the precise location of the boundaries of the claims and ownership of mineral rights on specific tracts of land comprising the claims may be in doubt. Such claims would not be converted to lease and tenure, and are, accordingly, subject to annual compliance with assessment work requirement. Other parties may dispute the Company's title to its mining properties. While the Company has diligently investigated title to all mineral claims and, to the best of its knowledge, title to all properties is in good standing; this should not be construed as a guarantee of title. The properties may be subject to prior unregistered agreements, first nation's land claim or transfers of land claims and titles which may be affected by undetected defects.

Environmental and Other Regulatory Requirements

Existing and possible future environmental legislation, regulations and actions could cause additional expense, capital expenditures, restrictions, and delays in the activities of the Company, the extent of which cannot be predicted. Before production can commence on any properties, the Company must obtain regulatory approval and there is no assurance that such approvals will be obtained. Although the Company believes its mineral and exploration activities are currently carried out in accordance with all applicable rules and regulations, no assurance can be given that new rules and regulations will not be enacted or that existing rules and regulations will not be applied in a manner which could limit or curtail production or development.



Operating Hazards including Insurance Risks

Mineral exploration involves many risks, which even a combination of experience, knowledge and careful evaluation may not be able to overcome. Operations in which the Company has a direct or indirect interest could be subject to all the hazards and risks normally incidental to exploration, development, and production of base metals, any of which could result in work stoppages, damage to property, and possible environmental damage. Although the Company currently holds certain insurance coverage, the nature of these risks is such that liabilities might exceed policy limits, the liabilities and hazards might not be insurable, or the Company might not elect to insure itself against such liabilities due to high premium costs or other reasons, in which event the Company could incur significant costs that could have a materially adverse effect upon its financial condition.

Key Personnel

Attracting and retaining experienced senior officers are critical to Signature's success. Recruiting qualified personnel as the Company grows is also critical to its success. The number of persons skilled in the acquisition, exploration and development of mining properties is limited and competition for such persons, is intense. As the Company's business activity grows, so may the requirement for additional key financial, administrative, regulatory and mining personnel as well as additional operations staff. If the Company is unsuccessful in attracting and training qualified personnel, the efficiency of its operations could be affected, which could have an adverse impact on future cash flows, earnings, results of operations and the financial condition of the Company.

Financing

To fund future exploration on its mining interests, the Company requires capital. Dependent on exploration success results, the Company may not have sufficient working capital and may have to access the capital markets. There is no assurance that such funding will be available to the Company, or that it may be obtained on terms favourable to the Company. Failure to obtain sufficient financing may result in delaying or indefinite postponement of exploration, development, or production on any or all of the Company's properties, or even a loss of property interests. The Company has no formal credit facilities at this time and given the Company's current stage of development, it is not expected that such credit facilities would be available to the Company.

Competition

There is aggressive competition within the mining industry for the identification, evaluation and acquisition of properties considered to have commercial potential. The Company competes with other mineral exploration companies, many of which have greater financial resources than the Company, for the acquisition of mineral claims, leases, and other mineral interests as well as for the recruitment and retention of qualified employees and other personnel. The Company's inability to compete with other mineral exploration companies for these resources may have a material adverse effect on the Company's results of operations and business.

Share Price Volatility

Similar to other mineral exploration companies, Signature's share price is subject to certain volatility which is not necessarily related to the operating performance, underlying asset values or prospects of the Company. The Company's share price may be influenced by external factors that are beyond the control of management. There can be no assurance that fluctuations in the Company's share price will not occur.



Fluctuation of Metal Prices

The market price of precious metals and other minerals is volatile and cannot be controlled. If the price of precious metals and other minerals should drop significantly, the economic prospects of the projects which the Company has an interest in could be significantly reduced or rendered uneconomic. There is no assurance that, even if commercial quantities of ore are discovered, a profitable market may exist for the sale of same. Factors beyond the control of the Company may affect the marketability of any minerals discovered. The marketability of minerals is also affected by numerous other factors beyond the control of the Company, including government regulations relating to royalties, allowable production and importing and exporting of minerals, the effect of which cannot be accurately predicted.

Community Relations

The Company's relationship with the local communities and First Nations ("Interested Parties") where it operates is critical to ensure the future success of its existing activities and the potential development and operations of its Lingman Lake project. Failure by the Company to maintain good relations with these Interested Parties could result in adverse claims and difficulties for the Company.

8.0 QUALIFIED PERSON

The scientific and technical content presented in this MD&A has been prepared, reviewed, and approved by Mr. Walter Hanych, P. Geo., who is a Qualified Person under NI 43-101 regulations and is a consultant of the Company.



CORPORATE DIRECTORY

DIRECTORS

Paolo Lostritto, Director, Chairman of the Board
Dan Denbow, Director
Stephen Timms, Director, Chair of the Audit Committee
Lisa Davis, Independent Director
John Hayes, Independent Director
Matthew Goodman, Independent Director

OFFICERS AND MANAGEMENT

Dan Denbow, Interim CEO
Rebecca Hudson, CFO
Sarah Morrison, Corporate Secretary

TECHNICAL COMMITTEE

John Hayes, Chair of Committee
Paolo Lostritto

ADVISORY BOARD

Dr. Scott Jobin-Bevans
John Leliever

AUDITORS

McGovern Hurley LLP
Toronto, ON

LEGAL COUNSEL

Weir Foulds LLP
Toronto, ON

TRANSFER AGENT

TMX Trust Co.
Toronto, ON

BANKER

Bank of Montreal
Toronto, ON

CORPORATE OFFICE

401 Bay Street, Suite 2704
Toronto, ON M5H 2Y4

Additional information is available on SEDAR at
www.sedar.com or
<http://www.signatureresources.ca/>

SHAREHOLDER INFORMATION

info@signatureresources.ca